

Data sheet

Art.No.: 70.352.0635.1

hood BAS GOT GI 6 M20 A1

Hood revos basic made of aluminum, for single locking lever with threaded hole M20 on the top, low version, 6-poles



Art.No.	70.352.0635.1
EAN	4015573598737
Order Unit	1

certificates / approvals



Technical data

general

housing material	aluminum
color	grey
surface	with powder coating
degree of protection (IP)	IP65
UV resistant	yes
flammability class of insulation material acc. with UL94	other
operating temperature range min.	-40 °C
operating temperature range max.	120 °C

model

construction	6
model of the housing	male
locking mechanism	single locking lever
cable entry	above
type of cable	thread
with cable screw gland	no
thread size M	20
thread size PG	
hinged lid	no
EMC-version	no
length	73.6 mm
width	43 mm

height	51 mm
--------	-------

classification

ECLASS 11	
ECLASS 8.1	27440202
ETIM 9.0	EC000437
ETIM 8.0	EC000437
ETIM 7.0	EC000437
ETIM 6.0	EC000437
ETIM 5.0	EC000437
ETIM 4.0	EC000437
ETIM 3.0	EC000437

product compliance

ROHS conformity status	compliant
REACH-SVHC conformity status	compliant

Fits with

Art.No.:	Article/type description:	Description:
70.300.0602.0	female insert BAS BUS 6 2,5 50 AG	Female insert revos basic, 6-poles, rated current: 16A, rated voltage: 500V, with silver-plated contacts
70.300.0640.0	female insert BAS BUS 6 2,5 50	Female insert revos basic, screw type, 6-poles, rated current: 16A, rated voltage: 500V, with tin-plated contacts
70.301.0640.0	female insert BAS BUS 6 2,5 50 AU	Female insert revos basic, 6-poles, rated current: 16A, rated voltage: 500V, with gold-plated contacts
70.302.0640.0	female insert BAS BUS OD 6 2,5 50	Female insert revos basic, 6-poles, rated current: 16A, rated voltage: 500V, with tin-plated contacts
70.310.0602.0	male insert BAS BUS OD 6 2,5 50	Female insert revos basic, 6-poles, rated current: 16A, rated voltage: 500V, with tin-plated contacts
70.310.0640.0	male insert BAS STS 6 2,5 50	Male insert revos basic, screw type, 6-poles, rated current: 16A, rated voltage: 500V, with tin-plated contacts
70.311.0640.0	male insert BAS STS 6 2,5 50 AU	Male insert revos basic, 6-poles, rated current: 16A, rated voltage: 500V, with gold-plated contacts
70.312.0640.0	male insert BAS STS OD 6 2,5 50	Male insert revos basic, 6-poles, rated current: 16A, rated voltage: 500V, with tin-plated contacts
70.500.0653.0	female insert BAS BUF 6 2,5 50	Female insert revos basic, spring type, 6-poles, rated current: 16A, rated voltage: 500V, with silver-plated contacts
70.510.0653.0	male insert BAS STF 6 2,5 50	Male insert revos basic, spring type, 6-poles, rated current: 16A, rated voltage: 500V, with silver-plated contacts
70.700.0658.0	female insert BAS BUC 6 50	Female insert revos basic, 6-poles, rated current: 16A, rated voltage: 500V, with tin-plated contacts
70.710.0658.0	male insert BAS STC 6 50	Male insert revos basic, 6-poles, rated current: 16A, rated voltage: 500V, with tin-plated contacts
72.300.0653.0	female insert BAS BUS 6 2,5 69	Female insert revos basic, 6-poles, rated current: 16A, rated voltage: 690V, with tin-plated contacts
72.310.0653.0	male insert BAS STS 6 2,5 69	Male insert revos basic, 6-poles, rated current: 16A, rated voltage: 690V, with tin-plated contacts
72.700.0658.0	female insert BAS BUC 6 69	Female insert revos basic, 6-poles, rated current: 16A, rated voltage: 690V, with tin-plated contacts
72.710.0658.0	male insert BAS STC 6 69	Male insert revos basic, 6-poles, rated current: 16A, rated voltage: 690V, with tin-plated contacts
73.800.2453.0	female insert DD BUC 24 1,5 25	revos DD 24 pole + ground, female insert 250V/10A, crimp connection

73.810.2453.0	male insert DD STC 24 1,5 25	revos DD 24 pole + ground, male insert 250V/10A, crimp connection
70.405.0653.0	female insert BAS BUP 6 2,5 50 AG	Female insert revos basic, 6-poles, rated current: 16A, rated voltage: 500V, with silver-plated contacts
70.415.0653.0	male insert BAS STP 6 2,5 50 AG	Male insert revos basic, 6-poles, rated current: 16A, rated voltage: 500V, with silver-plated contacts
70.810.1056.0	male insert BAS STCK 10 50 PC	Male insert revos basic, 10-poles, polycarbonate insert, rated current: 16A, rated voltage: 500V, with gold-plated or silver-plated contacts
70.800.1056.0	female insert BAS BUCH 10 50 PC	Female insert revos basic, 10-poles, polycarbonate insert, rated current: 16A, rated voltage: 500V, with tin-plated contacts

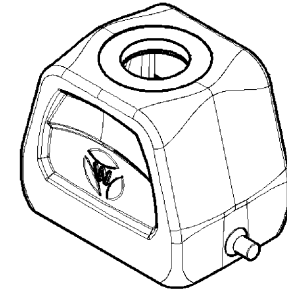
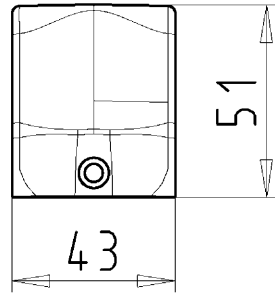
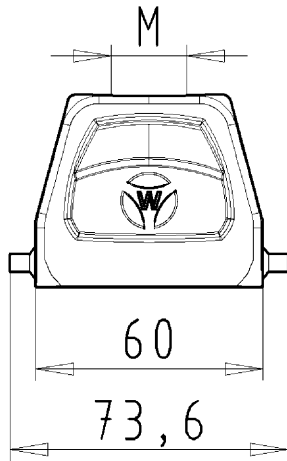
These dimensions will be especially checked at delivery
Only inspection dimensions
With /E marked dimensions are only valid for internal use

Diese Maße werden bei Abnahme besonders geprüft
Ausschließlich Prüfm Maße
Mit /E gekennzeichnete Maße sind nur für interne Zwecke gültig



E

F



Varianten/ Variants

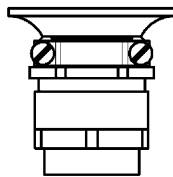
.0



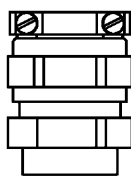
.2



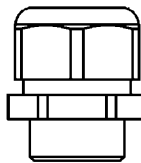
.3



.4



.5



70.35 ⁴ ₂ .0635.5	BAS GOT GI 6 M25 M20 A 5	Kabelverschraubung(KV), IP65 /Cable gland(CG), IP65	
70.35 ⁴ ₂ .0635.4	BAS GOT GI 6 M25 M20 A 4	KV mit Zugentlastung, IP54 /CG with strain relief, IP54	
70.35 ⁴ ₂ .0635.3	BAS GOT GI 6 M25 M20 A 3	KV mit Zugentlastung und Knickschutz, IP54 /CG with strain relief and bend support, IP54	
70.35 ⁴ ₂ .0635.2	BAS GOT GI 6 M25 M20 A 2	Zwischenstutzen /Bushing	
70.35 ⁴ ₂ .0635.1	BAS GOT GI 6 M25 M20 A 1	Gewindebohrung /Thread hole	X
70.35 ⁴ ₂ .0635.0	BAS GOT GI 6 M25 M20 A 0	Kabelverschraubung(KV), IP54 /Cable gland(CG), IP54	
Bestellnummer /Order number	Typ /Type	Varianten /Variants	dar- gestellt /drawn
Weitere Daten siehe KATALOG oder eKatalog. Additional data see CATALOG or eCatalog.		www.wieland-electric.com eshop.wieland-electric.com	

Tolerierung Size ISO 14405 (E)/Tolerance system Size ISO 14405 (E). (This ISO-standard describes the envelope principle. According to the envelope principle the deviations of form and parallelism are limited by the size tolerances).						ja/yes <input checked="" type="checkbox"/> Stoffverbots- und Deklarationsliste nach UU-TQM-05/03 ist einzuhalten. Conformity with Wieland document UU-TQM-05/03 (list of prohibited / declaimable hazardous substances) to be declared!					
Freitoleranz nach General tolerance			CAD - Zeichnung, keine manuellen Änderungen CAD - drawing, no manual modifications allowed			1.Verwendung: - First Use:			Blatt: 1 von 1 Sheet: of 1		
	/		Werkstoff/Material Aluminium beschichtet/ coated grau/ grey	2013	Tag/Date	Name	T	Zeichnung Nr./Drawing No. 70.352.0635.0 13K	Index		
	/			gezeichnet drawn	20.08.	Treschan					
	/			Maßstab/Scale	geprüft checked	-				-	
	/			1:2	Normgepr. Stand. check	-				-	
	/	Vol.	mm³	Ofl./Surf.	mm²	Ersatz für/Replacement for: -					
	/		wieland	Type revos BASIC	Benennung/Title GEHAEUSEOBERTEIL Baugröße 6-Kabelabgang oben-M20/M25 Hood size 6-cable outlet top-M20/M25						
	/										
Index	Datum / Blatt Date / Sheet										
Änderung/Revision											

Weitergabe sowie Vervielfältigung dieses Dokuments, Verwertung und Mitteilung
seiner Inhalte sind verboten, soweit nicht ausdrücklich gestattet.
The reproduction, distribution and utilization of this document as well as the
communication of its contents to others without express authorization is prohibited.

703520635013K_2 CADW3028 Treschan 2013-09-20T09:06:55 1.000